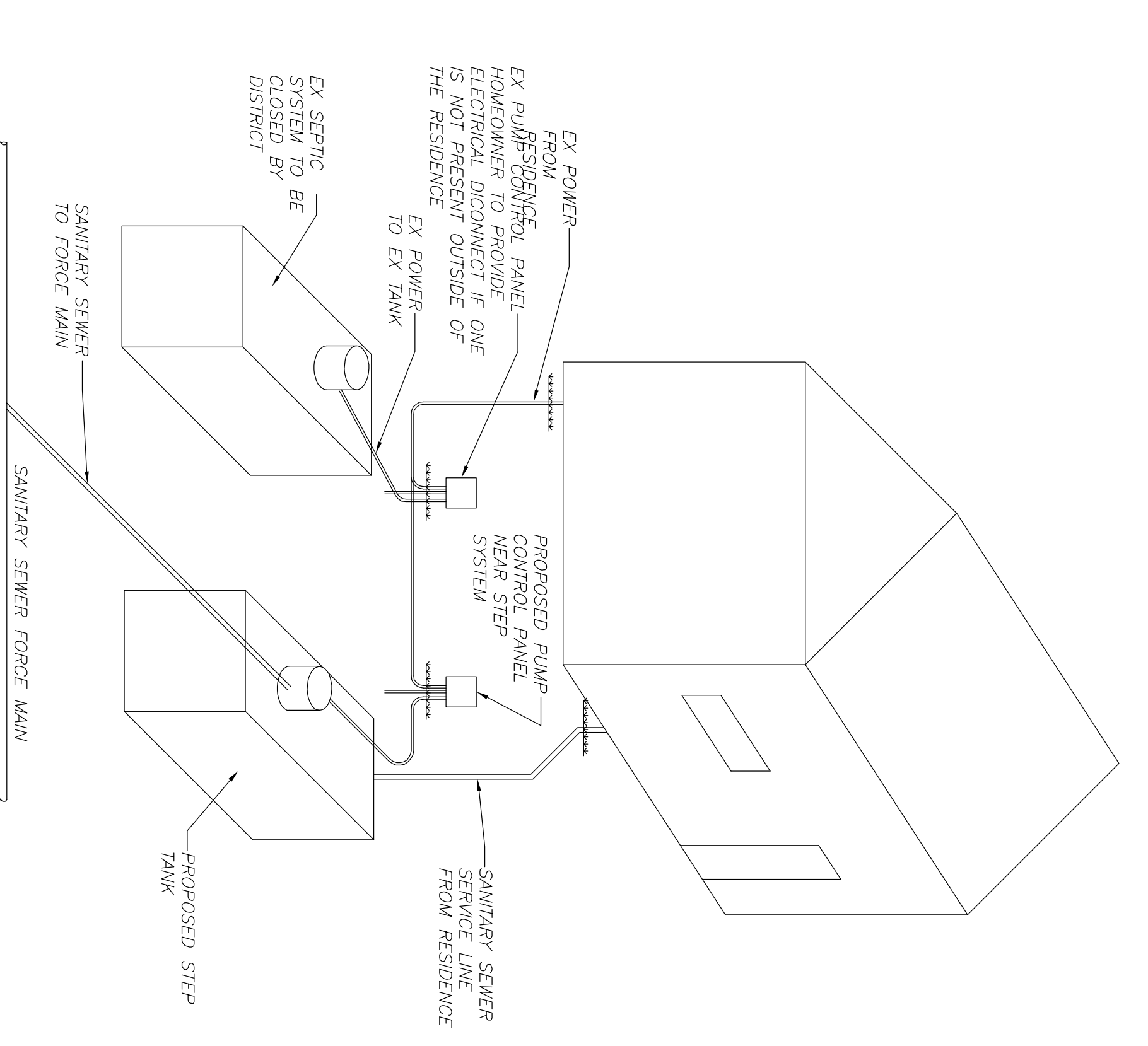
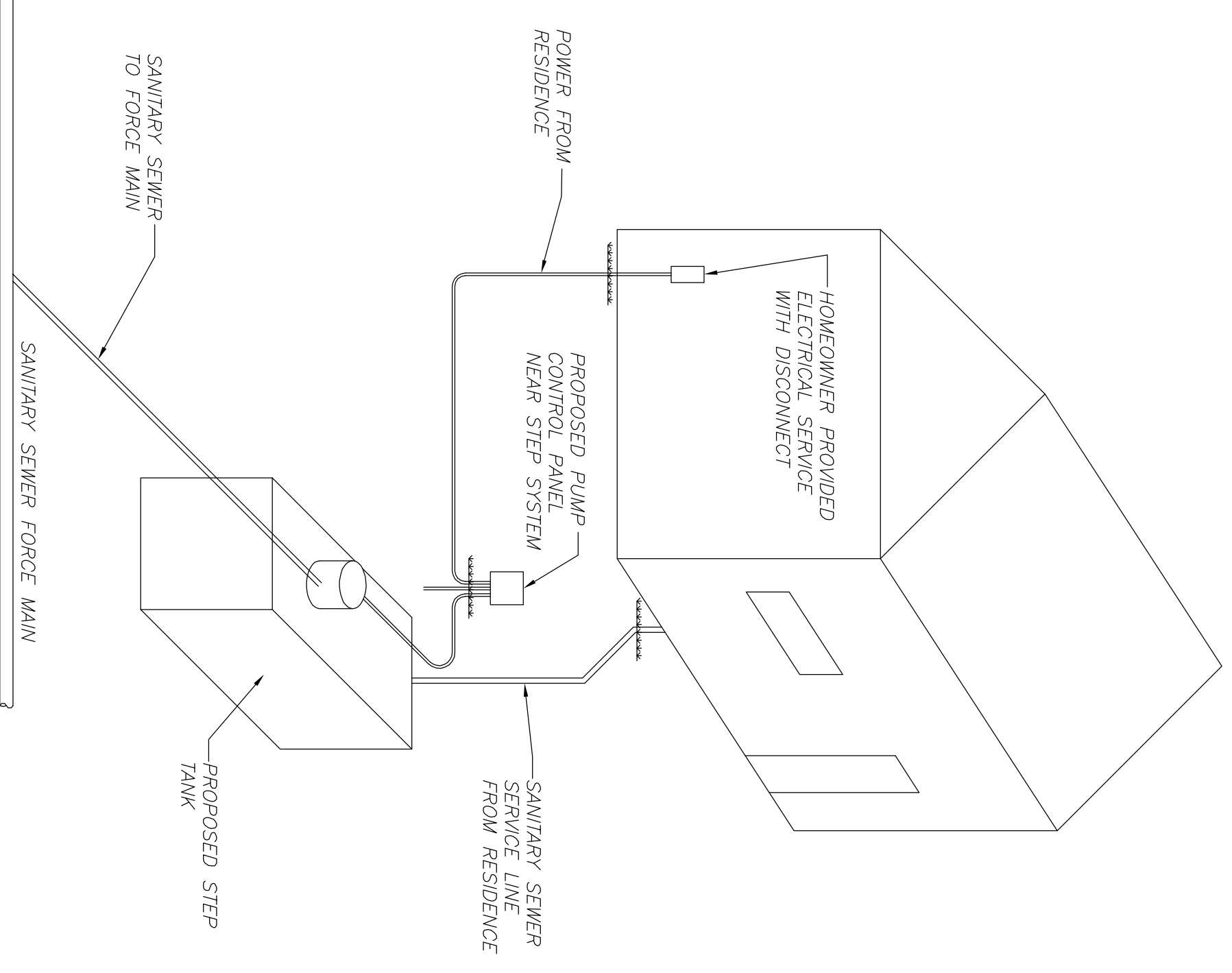


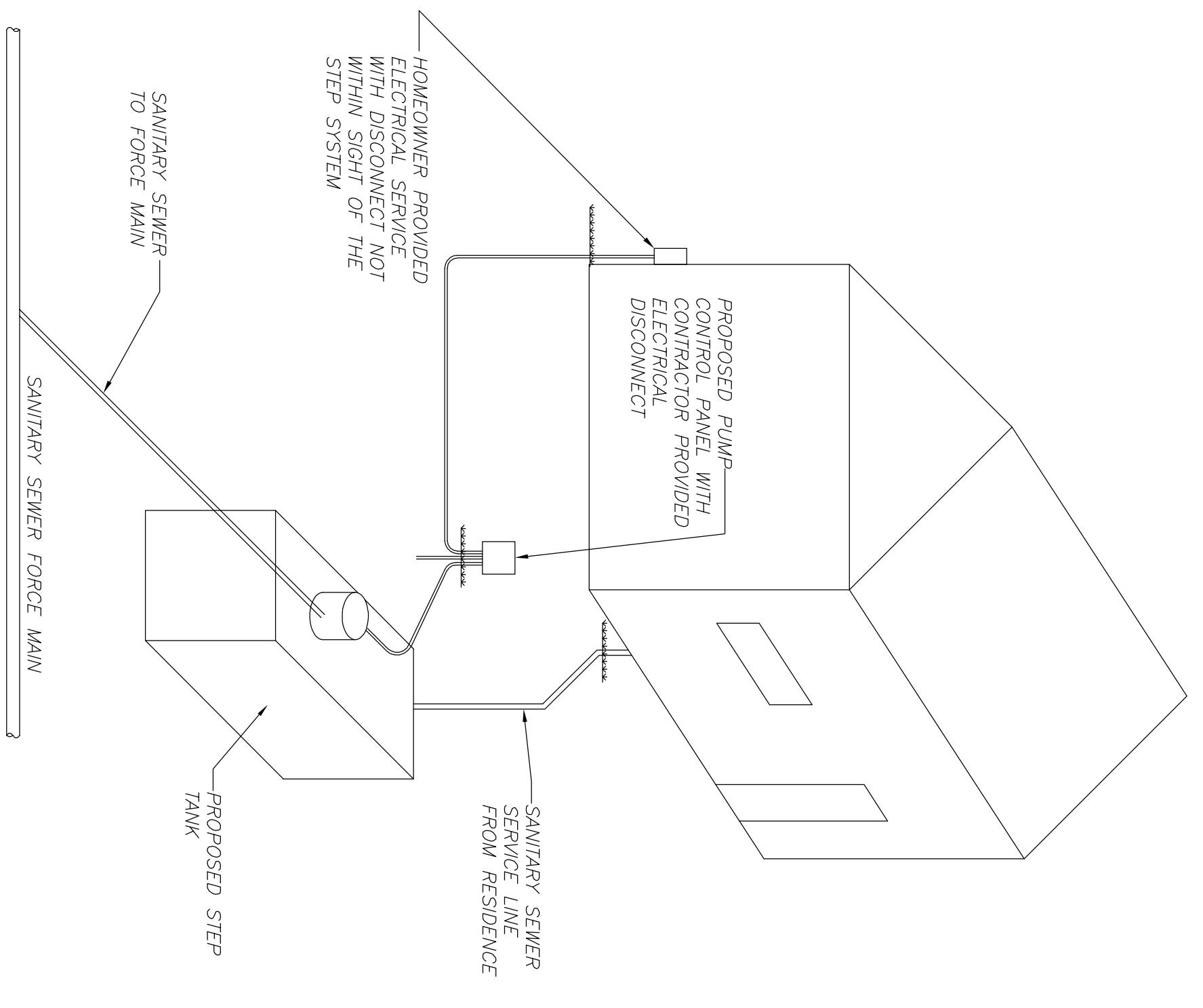
TYPICAL HOMEOWNER PROVIDED ELECTRICAL SERVICE ON RESIDENCE WITH SIGNED ELECTRICAL EASEMENT (NO SCALE)



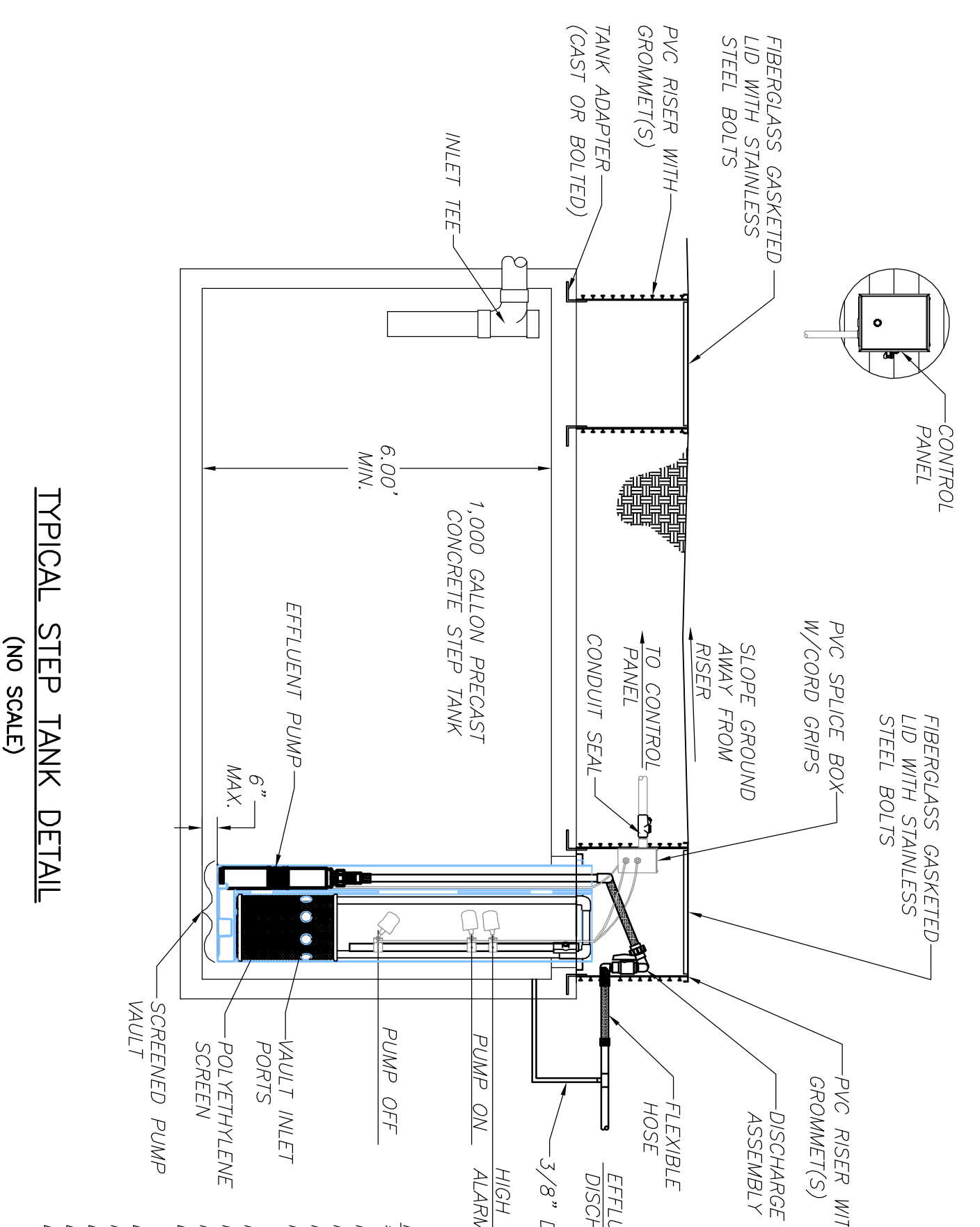
TYPICAL HOMEOWNER PROVIDED ELECTRICAL SERVICE AT EXISTING SEPTIC SYSTEM WITH NO SIGNED ELECTRICAL EASEMENT (NO SCALE)



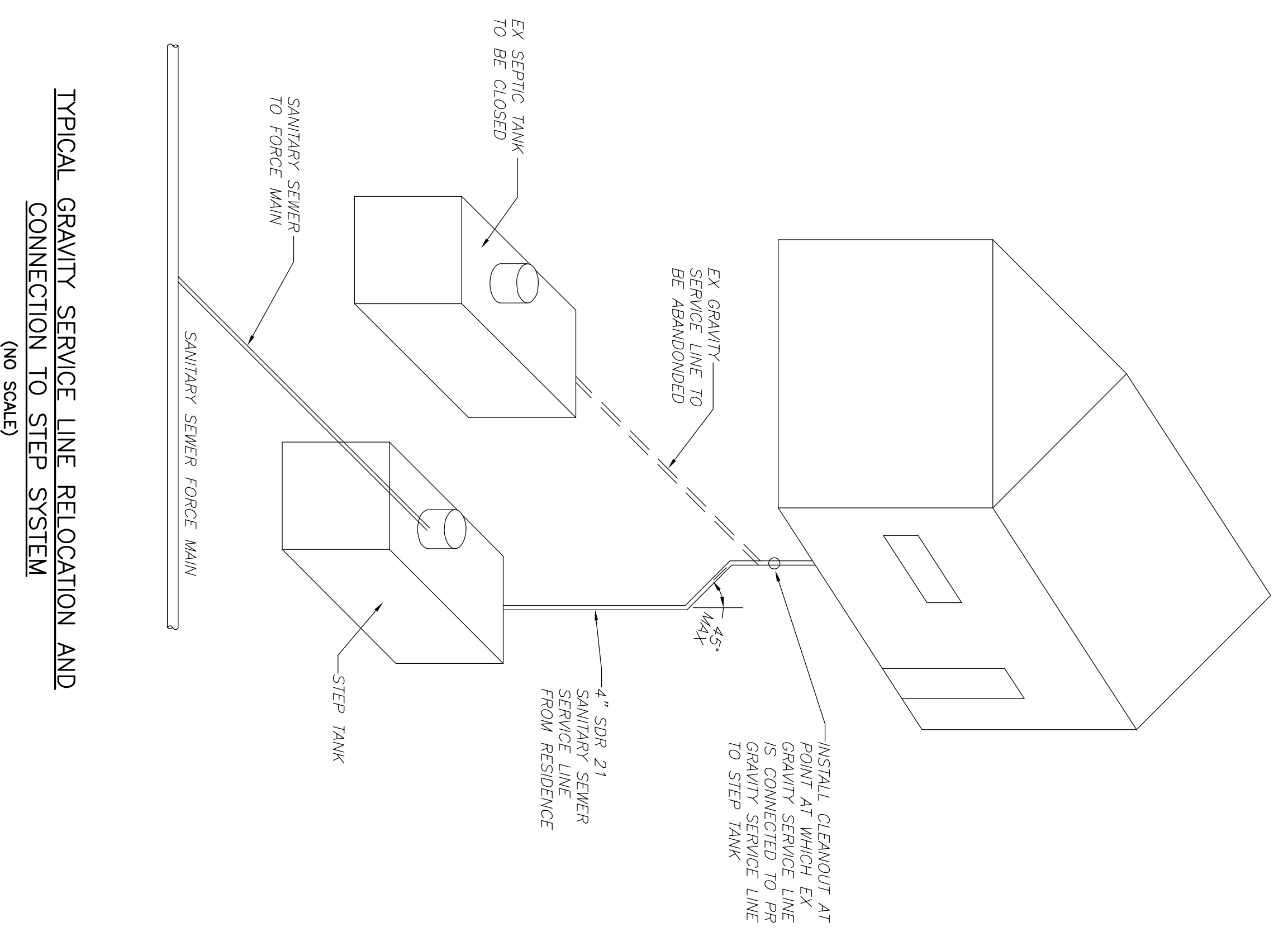
TYPICAL HOMEOWNER PROVIDED ELECTRICAL SERVICE WITH NO SIGNED ELECTRICAL EASEMENT (NO SCALE)



TYPICAL HOMEOWNER PROVIDED ELECTRICAL SERVICE WITH OR WITHOUT EASEMENT, BUT NOT WITHIN SIGHT OF STEP SYSTEM (NO SCALE)

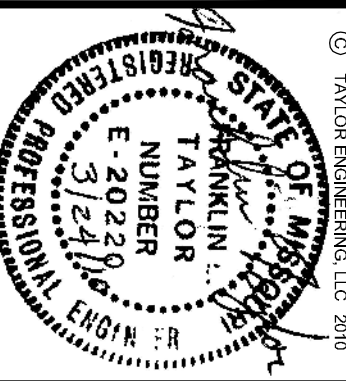


TYPICAL STEP TANK DETAIL (NO SCALE)



TYPICAL GRAVITY SERVICE LINE RELOCATION AND CONNECTION TO STEP SYSTEM (NO SCALE)

TAYLOR ENGINEERING L.L.C.
 ENGINEERING, SURVEYING, CONSTRUCTION TESTING
 P.O. BOX 674 109 E. COLUMBIA FARMINGTON, MO 63640
 573.756.9226 FAX 573.756.7310
 DISCIPLINE: PROFESSIONAL ENGINEERING
 WWW.TAYLORENGINEERINGCENTER.COM
 CERTIFICATE OF AUTHORITY: 2000146639
 EXPIRATION DATE: DECEMBER 31, 2010



The Professional Engineer shall be responsible for the design, construction, and maintenance of the project. The Professional Engineer shall be responsible for the design, construction, and maintenance of the project. The Professional Engineer shall be responsible for the design, construction, and maintenance of the project.

NAME: FRANKLIN L. TAYLOR
 LICENSE NO.: E-20226
 EXPIRATION DATE: 12/31/2011

FORCE MAIN DESIGN
PWS #13 OF JEFFERSON COUNTY
JEFFERSON COUNTY, MO
STEP SYSTEM DETAIL SHEET

REVISIONS	
NO	DESCRIPTION

DRAWING NO: C30
 DATE: 3/24/2010
 DRAWN BY: JEG
 CHECKED BY: FLT
 APPROVED BY: FLT
 TITLE: PROJECT ENGINEER